



Family fun on Village Green



The community Christmas on the *Village Green* is happening again this year on Saturday 20th December. It is bigger than ever as the church is celebrating two hundred years since the Gospel was preached on Aotearoa soil. The Paparoa Community Church is organising this event and hoping for much community participation. It will start at 4pm with children's games, an enactment of the arrival of the Gospel will follow. There will be a traditional welcome and challenge by the Maori community. Talented singers Geraldine and David Jenkins will sing Pokarekareana and the choir will sing Te Harinui. There will be items from individuals and groups and of course the choir is singing some Christmas favourites with carol singing for all.

There is to be a children's dress up competition. Please come dressed in costumes from the characters of the Christmas Story - such as Mary, Joseph, wise men, star, shepherds, sheep, inn keeper, donkey, and angels.

A sausage sizzle will be served throughout the programme from 5.30pm. Available also will be Christmas mince tarts, and soft drinks. The Paparoa Village Café will be open for the duration of the programme for coffee or if you wish to purchase extra food for your family.

Come along and bring your family and invite friends from out of town to join us on this special occasion which promises to be great fun!

Please note that PPI is not holding a Christmas Carnival this year in deference to the Community Church event.

PP



Pohutukawa - future glory

A busy little group of workers were seen recently on the far riverbank in the village planting 60 pohutukawa trees.

It is hoped these trees will assist in holding the bank in times of flood, as well as enhance our environment. Some of us will not live to see them in all their mature glory but what a wonderful sight it will be for those who do.

Thanks go to the Paparoa Village Cafe and Kauri Park Nurseries for their donation of



trees, and to Keep Paparoa Beautiful and students from Northtec Horticultural Course for doing the hard planting work.

A fond farewell and thank you ...

The faces behind the counter at Paparoa Store have changed. After three and a half years proprietor Frank Wu has sold his business. As Frank tells it, the reaction from some of his customers was one of disbelief as he has obviously endeared himself to the community. Equally concerning is that his delightful niece Myra will not be staffing the checkout. Her friendly smile and helpfulness will be much missed.

Frank and his wife Susan have decided that their family comes first and with Michael and Danny at good schools in Auckland it's time for the family to be together. Michael is in year 12 and planning a career in either medicine or engineering. In his time in Paparoa, Frank has become a valuable part of the community. Apart from providing excellent service through his store he has joined Paparoa Lions Club. There he has found new friends and been able to take part in community activities which he has really enjoyed. He was particularly honoured when the Community Church helped him celebrate his 50th birthday. Myra has now received her residency visa and is looking forward to new opportunities in Auckland.

Frank, his family and Myra will take a short break at home in China before returning to NZ in the New Year.

Frank wishes to thank all those many people in Paparoa who have not only made his business a success but who made him feel very welcome here. He says he will miss his many friends but hopes to maintain contact as he has retained ownership of the store buildings and will be assisting the new proprietors Vincent Huang and his wife Luna to settle in.

From the Paparoa community, PP wishes Frank, Susan, Michael, Danny & Myra a very big thank you and best wishes for the future. Zhu ni haoyun!. Good luck!



Danny, Michael, Frank, Susan and Myra

Paparoa Press PP

PUBLISHED MONTHLY BY

Progressive Paparoa Inc. (PPI),
for Paparoa, Pahi, Matakohē,
Whakapirau and Tinopai.

CIRCULATION 1,000

CONTACT US

- press@paparoa.org.nz
- ph 09 431 7209
- PPI, PO Box 107, Paparoa 0543
- www.paparoa.org.nz

ADVERTISING

Rate Card available by email
Booking & Copy deadline:15th of monthPublication date 1st of month

Only 70 days to go - before the Paparoa A&P Show 2015

It is hard to believe but there are fewer than 70 days to go before the 2015 Paparoa A&P Show. Preparations are frantically being made with everything on track.

Painting: The shearing shed, spectators' stand and water tank are getting a fresh look and the show is in the final stages of negotiation with a well-known company to sponsor the repair and painting of the goat pavilion. The new paint colours chosen will integrate with other recently painted buildings and the forthcoming signage.

Sports Pavilion driveway: The area around the Sports Pavilion was in need of a make-over. This has been made possible through the efforts of Battensby Brothers and Powell Contracting combined with a very generous donation of metal from Atlas Quarries. Operating with very modest financial resources the Show relies on support from local people and organisations. A big thank you to our contractors and Atlas.

Signage has been approved. In November the Show gained full approval to erect its signs knowing that it will comply with current regulations about signs. Off-road sites on private property have been secured for the 12 new road signs that will be up from mid-December until after Show Day.

Positive feedback has been received about the new website www.paparoashow.org.nz and people are starting to use the new email addresses promoted on the website.

Gate prizes will be given at the 2015 Show. The first 500 people to enter the gates will be in the draw to win free gate prizes. The biggest of these so far is a brand new household water pump donated by McQuinn Pumps from Whangarei valued at \$975.00. Plus there will be many more – at least 50, maybe 100.

New membership offer: Equestrian, cattle and dairy goat exhibitors are being



offered a new class of membership which provides a 25% discount on their entry fees and free entry to the Paparoa A&P Show plus 11 other Northern Districts Shows.

Deadlines coming up: 30th November is the date that Sponsors' pledges should be paid. 12th December is the last day for Stall Holders to be eligible for their Early Bird discount of 5% off site fees.

Volunteers: The Show needs volunteers to help between now and show day. This year's Canterbury A&P Show had 500 but little old North Kaipara will obviously have many fewer.

Can you help? It's a great opportunity to meet new people and contribute to a valuable community activity as well as preserving a tradition - 2015 will be the 139th Paparoa A&P Show. To discuss how you may be able to get involved please call Gary Christie 09 431 6011.

PAINTER

Dave Stephenson

- Interior
- Exterior
- Roofs
- Mould spraying
- Waterblasting

No job too small

09 431 6623
027 490 3522

Country Cutz

Gay Northcott
The Salon - Paparoa Village



*Merry Christmas to all
Book in early
for your appointment!
Thanks for all your support*

- Ladies & Mens Cuts
- Perms, Colours & Highlights
- Weddings

Open Thurs-Fri
Wed & Sat by appt

After hours phone Gay 431 7007
Salon 431 7255

Christmas Day Lunch

The Paparoa Community Church is hosting a Christmas lunch on Christmas Day for those not going anywhere or who have no-one to share the Christmas cheer with.

The lunch is preceded by the Christmas Carol Service at the Church.

You are most welcome to join us for the Carol service or just join us for lunch.



See you there

Merry Christmas

Have a safe & happy holiday season
Thank you to all my clients past and present.
See you in 2015!

Leanne Walker

Licensee Salesperson

021 431 619 a/h 09 431 6199

leanne.walker@raywhite.com

Bogue Real Estate Ltd

Licensed (REAA 2008) 09 431 8820
www.rwarkworth.co.nz



Ray White

THE KAURI MUSEUM

Real New Zealand Heritage

Get into the Christmas Spirit!

Join us on 27th November & 11th December from 6pm for



**Christmas cheer
Late night shopping
Mulled wine & cake
Christmas Carols**

Free gift wrapping available

5 Church Road, Matakōhe, Northland. p: 09 431 7417 w: www.kaurimuseum.com



Paparoa Primary School

It is hard to believe that the end of the school year is only a matter of days away - Term Four has certainly flown by. We've had another happy and successful month with everyone achieving their own personal successes.

Our athletics day was held in November with children participating in a variety of 'run, jump & throw' events including vortex, discus/Frisbee, shot put/bean bag, long & high jump, sprints and a mixed-age relay. It was great to see everyone giving all the activities a go. Year 4-6 children represented us at the Bream Bay athletics comp held in Waipu.



front gate, we're enjoying fresh strawberries and peas, and our courgettes & beans are also coming along.

Our pool will soon be ready for use and with good weather we can enjoy swimming before year end.

Year 6 students celebrate the end of their time at Paparoa Primary School by having a day trip to Rainbows End on December 3rd and we all look forward to our whole-school picnic day at Pahi on December 5th. School prize giving and concert will be at Paparoa Hall 12noon, Thurs 11th December. Everyone is welcome to join us.

2014 has been a positive year for us all at the school and we are fortunate to have the support of a strong local community. Thanks also to Duffy Books in Homes, KidsCan, Kickstart, Project Energize & Tooth Brushing in Schools supported by the NDHB. We thank you all and wish everyone a happy and safe summer.

School starts for 2015 on Thurs, 29th January. We look forward to seeing everyone back after a well-deserved break and welcome new enrolments.

Room 3 (Years 1-3) took part in an online maths competition run by Sumdog that was open to all Northland Schools. We are very proud of them for gaining 1st place ahead of Kamo Intermediate and Whangarei Primary.

We've started to replant our gardens as part of the EnviroSchools programme - flowers are blooming at the

Otamatea Quilters : Results

VIEWER'S CHOICE: 1st *Spring Flowers* Betty Cairns; 2nd *Yokos Collection* Lyn King; 3rd *Hearts and Doves* Herta Jakle

MAIN RAFFLE: 1st Heather McInnes; 2nd D D Tulloch; | 3rd Bev Williams

TABLE RAFFLES: Glennys Mooney, Lyn King, Wendy Johnson, Heather Whitehead

IT'S NOT OK

Libby Jones of Paparoa is one of 12 "Family Violence, it's not OK" champions for the Rodney/Otamatea area. A launch in Wellsford on 11 November began four months of raising awareness about family violence, encouraging people to talk about it and ask for help.

The champions come from a wide range of backgrounds, similar to those who experience family violence, which covers all walks of life.

Libby's key messages are, "Healthy communities are free from family violence" and "Family violence is everyone's business". She says we can't just look the other way and ignore the suffering. Children are particularly vulnerable and they rely on adults to keep them safe.

Libby has had a career in health and social services, and is also an active community volunteer. For 10 years she was a volunteer



for Whangarei Women's Refuge where she saw the impact of family violence on children and families.

"Parenting is one of the hardest but most rewarding jobs there is" she says. Sometimes parents need to learn new ways to interact with and parent their children, rather than repeating what they experienced themselves growing up, which may not have been helpful.

Libby encourages people to ask for help and to ask others, "Are you ok?" if they are worried. There is help, and good resources are available for all - don't hesitate to ask.

If you have concerns or want more information you are welcome to contact Libby on 021 208 0093.

SKELTON'S

*We Wish all our Customers
a Happy and Safe
Christmas and New Year*



**Christmas
LUCKY
SHOPPER
draw**

**Spend \$20
or more and be in
to Win a \$100 gift
Voucher**

**starting 1st December and
ending 24th December**



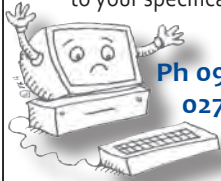
Skelton's Paparoa Drapery

Mon-Fri 8.30am to 5pm Sat 9am to noon

Ph 431 7306

R & D MACDONALD COMPUTERS

Call Ross with your
computer problems & repairs
He'll even build a computer
to your specifications



Ph 09 431 6221
027 932 8114

email: ross@paradisebreeders.co.nz

PAPAROA LIBRARY Book Review: December



TITLE: **BURIED ANGELS**

AUTHOR: **CAMILLA LACKBERG**

'Buried Angels' is the eighth title in Camilla Lackberg's highly successful crime series set in the Swedish village, Fjallbacka. When a local woman returns to the area after many years and begins to renovate her old family home, interest in a decades old mystery is reignited. A suspicious fire, old blood under the floorboards and threatening shots are the catalyst for reopening the cold case.

Like the earlier titles, 'Buried Angels' follows both the work and home lives of local detective Patrik Hedstrom and his author wife, Erica, who has the knack of discovering vital clues that seem to elude the police. Although the titles are chronological in the lives of Erica and Patrik they can be read in any order as each book focuses on a specific crime. Camilla Lackberg's skill at combining modern crimes with historical events and the everyday lives of the characters make these titles ideal for a wide audience.



KAURI COAST SEAFOODS

Oysters • Mussels • Smoked Fish

Now agents for UFO Cold Smokers,
Cookers & Accessories

09 431 6684
021 245 8820

540 Pahi Rd
Paparoa



Fresh flounder supplies daily

Monthly photo competition continues Interesting monthly prizes awarded ...

How about keeping your camera on hand to snap a photo of our lovely Kaipara area while you're out enjoying the pleasures of our local environment this summer and holidays?

Whether it be a landscape, or flora and fauna, or people & events, capture that image which showcases our collective Kaipara personality.

There are opportunities galore


with a maximum of two entries per person per month. Entries are due on 3 Dec, followed by 3 Jan, 3 Feb and 3 Mar.

Send your photos to press@paparoa.org.nz with your surname and photo name in the subject line. *Be in to win*, be published in the Press and inspire us all to see what beauty and interest surrounds us. Details in November Press or go to www.paparoa.org.nz.



Pegasus Engraving

The next month's prize will be from Lynne Warbrooke's PEGASUS ENGRAVING.

The winner can choose to have the winning photo put on a 5x7 chromalux board, with caption (optional), or put on to a white or a black colour-change mug. 



NORTHLANDS BIGGEST
BED OUTLET STORE



- 1/2 PRICE BEDS
- SECONDS-SAMPLES
- SLAT BEDS
- PILLOWS
- TOPPERS
- ADJUSTABLE BEDS
- BEDROOM FURNITURE

STOP BY AT ELLE CEE'S AWARD
WINNING CAFÉ- WHEN YOU COME.

(09) 439 2243
18 Freyberg Road, Ruawai



PAHI REGATTA ANNIVERSARY WEEKEND SAT 24 & SUN 25 JANUARY 2015

Preparations for the 2015 Regatta are once again in full swing. There will be the usual launch and runabout races, Miss Pahi contest, bath tub races, kayak races, stalls and rides on the green, dinner on the Saturday night and live music in the marquee on both Saturday and Sunday nights.

We are currently looking for stall holders

If you are interested please contact

Kurt on 021 223-5677

Mike on 027 285-1408

or email macservice@xtra.co.nz





HEY, KIDS ... HERE'S A NEW SPACE JUST FOR YOU ...

This month we're starting a page aimed at our younger community members – we will try to include a range of

content- activities, puzzles, items of interest, poems, book reviews and maybe the occasional joke. If you'd like to contribute something yourself, please email press@paparoa.org.nz

School's about to finish for the year and you're no doubt looking forward to a summer of fun outdoors. Here are a couple of jokes to share at the end of term.

Q. Why did the teacher wear sunglasses? A. Because her class was so bright!

Q. Why did the boy eat his homework? A. Because the teacher said it was a piece of cake.

With Christmas just around the corner we thought you might like to have a go at making these sparkly baubles for your Christmas tree.



You will need: Thread or thin string about 20cm long, 8 strips of foil about the same length, PVA glue, tissue paper, decorations of your choice.

To make: Fold the thread in half then scrunch a strip of foil into a ball around the ends of the thread. Squeeze the foil tightly.

Scrunch each strip of foil around the ball, one at a time, then roll the ball under your hand to make it smooth.

Brush PVA over part of the ball and press on strips of white tissue. Continue until the ball is completely covered. When the glue is dry, glue on lots of strips of coloured tissue, covering the ball in the same way.

To decorate: Decorate your ball with stars, sequins or glitter.

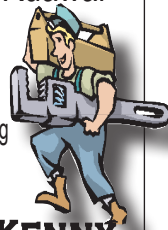
When you've finished decorating your bauble: brush PVA over the ball – when it is dry it will look nice and shiny. PP



PLUMBER

Kaiwaka to Ruawai

- 30 years' experience
- All plumbing services including new housing and maintenance



ANDREW KENNY
ph 027 642 8320

HANDYMAN



all jobs,
odd jobs

BUILDING & PAINTING
1000 L TANKS FOR SALE

ph Cam 431 6309
021 77 77 92

LANDSCAPE SUPPLIES



OPEN:
Weekdays
8am to 5pm
Saturday
8am to noon

Powell Contracting Ltd

Diggers and Trucks for all your
Earthwork & Cartage requirements

Now Stocking

Daltons & Watkins:

- Potting Mix
- Compost
- Bagged Shell
- Pebble and Scoria
- Bark & Fertiliser



We Also Stock

| | |
|---------------|-------------------------------------|
| Bulk Compost | Timber |
| Topsoil | Posts |
| Sand | Battens |
| Riverstones | All grades of metal Nails & Staples |
| Lime Chip | Pro-max water tanks |
| Blue Chip | Aqua water tanks |
| Bark | Drain coil |
| Post Peelings | Culverts |
| Woodchip | Hurricane Gates |
| Builders Mix | Full range of |
| Cement | StrainRite fencing supplies |
| Easi-crete | |



Powell Contracting Ltd, 2088 Paparoa Valley Road, Paparoa
Ph/Fax 09 4316 331

Paparoa Store

Proudly Supporting Paparoa

OPEN 7 DAYS

Monday-Saturday 7am-6pm
Sunday 9am-5pm



We stock a great selection of
CONFECTIONERY, ORGANIC, DELI, MEAT,
FRUIT, VEGES, FROZEN GOODS, BEER, WINE
and a wide range of grocery items at excellent prices

DVD's \$1 to \$8 per night
EFTPOS NZ HERALD POST CENTRE

Phone / Fax 431-7320
Cnr. Franklin Road and State Highway 12

Computer Use & Training

Getting your computer to work the way YOU want

Call Rach in Paparoa
022 170 5599
rachel.sutton@piper.co.nz

REMEMBER!



Your pets need a holiday too

Celebrating Christmas

*By all means ...
decorate your houses
stuff your turkeys
and yourselves

celebrate in pagan rituals
of indulgence and excess

but if you simply can't afford it
you may be closer than you think
to the spirit found within us
not in rounds of Christmas drinks*

*celebrate in simple stillness
one who came of humble birth
with a precious gift to offer
the gift of his own life on earth*

*by all means ...
keep your festive rituals
in the name of Christmas cheer
but this day, as on any other,
LOVE is the greatest gift we share*

Lynn Frances

Letters from the Old Post Office

It seems to me that history is like bones, it gives dates and dry facts but it also gives something for stories to grow around.

And it's the stories that I remember, not just what and when something happened, but how.

I can't remember the date a beautiful rose I grow reached England for the first time but I remember the story it tells. Apparently, this Apothecary's rose arrived with King Henry



II (after a gruelling Crusade no doubt he needed something pretty). He had married Eleanor of Aquitaine, a la political convenience, while still retaining a beautiful mistress. Queen Eleanor disguised a deadly poison with the oils of the reddish Apothecary rose and Rosa Alba and polished her off (methinks, she killed the wrong one). However, a new rose arose near the place of the mistress's burial site, a mix of red and white stripes. This

sport is called Rosa Mundi after the fair lady. Now who could forget that tale of revenge and resurrection?

At school, reading the history of early New Zealand, I found it hard to recall what date and year something happened, but tell me that Samuel Marsden climbed Toka Toka for the 360 degree view and collapsed in the heat. I remember that.

Trying to take in important dates in the family bible I can only remember that Jessie-Maria boarded the Crusader in London. The first mate saw her climbing the gang plank and declared "I am going to marry that woman." And he did.

I can't remember the date of my great uncle's death but I can still hear my grandfather's voice saying that William was a volunteer fire fighter at Pahi, caught pneumonia fighting a fire and died in his father's arms. His father, grief stricken, having just buried his wife, commissioned a beautiful kauri head board for his final resting spot in the small cemetery looking over the waters to Whakapirau. (I must remember to warn him-in-the-shed, occasionally him-of-out-and-about in the fire truck).

Dates help to structure our memories, but it is the stories that make them live on.

Deb C



BulbsDirect

PROUD TO BE LOCAL

NZ's Premium Online Flower Bulb Store



www.bulbsdirect.co.nz
info@bulbsdirect.co.nz



Ground Cultivation: Chisel Plough & Power Harrow
Planting: Power Harrow & Airseeder (low to high rates)
Mulching: 2.8m mulching mower with airseeder if required
14 tonne Tip Trailer Bathtub construction style w/silage crate

RELIABLE, COURTEOUS SERVICE!!

Contact Wayne: 09 432 1117 or 021 728 963

WAG will happen in 2015!

Paparoa's Wearable Arts Gala (WAG) is happening in 2015. Just when it looked like being on the back burner Rachel Sutton has picked up the challenge of directing this important event on the local calendar.

Interim chair, Graham Taylor said he's thrilled someone of Rachel's experience in event management has come forward and that she will have full support from PPI. A number of people have offered to assist in this venture. Rachel said that although she's new to the area she is impressed with what happens in this small community. It's particularly exciting to be involved in the 10th anniversary of WAG. The new committee will be meeting soon to formulate ideas and get the planning underway. Rachel can be contacted on rachel.sutton@piper.co.nz

PP

Pets in the Valley



Lock up the chocolate! Christmas is nearly here and it is amazing how our clever canine friends can seek out those special boxes of Roses destined as gifts. Same goes for those tasty left over pieces of ham that usually have a nice layer of fat on them. To a small dog a feed of fatty ham can actually be life threatening.



How does that work? A quick physiology lesson about the pancreas. This organ is very boring looking and small but provides two essential functions for life. One is the production of insulin which controls our glucose levels and the other is the production of digestive enzymes for the process of digestion.

You may not have thought about it but it is very clever to be able to produce substances that digest protein and fat when the cells that are making it are themselves made out of protein and fat. To do this the enzymes are in an unactivated form which normally aren't activated until they enter the duodenum. For some not fully understood reason a high level of lipids in the blood, especially in an already fat animal, can trip these enzymes into activated mode and self digestion of the pancreas occurs. Not only is this extremely painful but if enough pancreas is affected it can be life threatening.

Prevention is best! Have a great Christmas with your human and animal friends.



Janine

Lance Keay Contracting Ltd

- Effluent Pond Cleaning
- Single Pass Tillage & Seeding
- Cultivation
- Fertiliser Spreading
- Hay & Silage Mowing
- 6 Ton Trailer

Taipuha RD1, Paparoa, 0571
09 431 6308 021 383 908
lance.k@extra.co.nz

The Old Post Office Guest House Bed & Breakfast

Deb & Kevin 09 431 6444
www.oldpostofficeguesthouse.co.nz



For a warm welcome

- SMALL GROUPS OR LARGE
- MEALS ON REQUEST

Serving the community since 1903

Hospice Memory Tree

Hospice is taking its Memory Tree to the Paparoa Market on 13 December. The memory tree, as you will know, is an invitation for people to remember loved ones who have died by writing their name, a message perhaps, on a card and tying it to the tree. The messages are later blessed at a church service. We have previously set the tree on the Store verandah.

A Christmas cake raffle will also be available. Doreen and Robyn have kindly agreed to have this in their shop for the previous week and it will be drawn at the market.

Ruth Smellie



g.a.s. Paparoa

Safety First

- Petrol, Diesel & Oil
- LOWEST priced milk
- Great variety of Bait



John & Nicki Eddy
09 431-6302

Mon-Fri 6.30am-6.30pm
Sat 7am-6pm; Sun 7.30am-5.30pm

You won't go away hungry!

THE CRUISER BAR and GRILL

- Wholesome, affordable meals
- Fully licensed
- Family friendly
- Inside-outside dining
- Private functions

In the village,
Paparoa Valley Road



OPEN WEDNESDAY to SUNDAY, 5pm 'TIL LATE

ph 09 431 6918

NEEDHAM PUMP SERVICES

For all Water Pump Supplies
& Repairs



09 431 8235

Ross 027 669 4464

Daryl 027 271 1961

32 Whaka Street, Maungaturoto

Medical news

Good things take time, but Paparoa Medical Society is pleased to announce the signing of a long term lease with Coast to Coast Healthcare for the whole building known as Paparoa Medical Centre.

This event secures a commitment from Coast to Coast Healthcare that will benefit the whole Paparoa community. With room to expand in a dedicated building C to C are inviting other health providers to share the facilities. It is increasingly important to have a healthcare provider near at hand as the community develops and ages.

Nancy Molloy, from C to C said, "the current facilities have become cramped and we are looking forward to enjoying the increased space we will now have. Dr Lyn Mitchell is really pleased to have a bigger consulting room".

Medical Society chair, Graham Taylor said the new arrangement is a very positive achievement for the Society and the community. PP



Also: foils, tints,
semi-permanents, crazy colours,
permanent waving, blow waves

Open Mon-Fri 9am to 5pm
(8pm Tuesdays)

Call in or phone Katrina
on 09 431 9120

Next to Well Kneaded Massage
Maungaturoto

art

*Every picture can
tell a story*

You've all seen the paintings, with the subject sitting squarely in the middle of the frame, surrounded by - well, space.

Although it is too restrictive to declare rules for composition, there are guidelines for placing the elements of a painting or photograph in ways that are more interesting and more effective at conveying a meaningful story to the viewer. Whether you are an artist or a viewer, it can help to have some understanding of the way a picture is constructed.

A high or low viewpoint can convey drama; this will place the horizon nearer the top or bottom of the canvas, not too neatly across the middle. Look upward into a tall tree to show its grandeur, down onto a beach scene to anticipate the excitement of arrival.

As we read text from left to right, top of the page down, so we read images. Generally things on the left, facing into the picture, appear to be entering; those facing to the right of the picture as leaving.

It creates interest to convey a sense that there is life beyond the frame: a glimpse of part of something nearby appearing in the foreground, or sight lines leading into and out of the picture.

In abstract works masses of shape and direction of line can give a sense of dynamic movement, leading the eye around the canvas. Tonal variations, from light to very dark also provide impact.

An interesting composition can suggest a story and engage the viewer.

Helen Budd

LOOKING FOR A FRESH APPROACH?

It's all about people and the love of the land.

Northland Country

Your local agent

is ready to list ... are you ready to sell?

Let's talk.



Catherine Stewart
Bayleys Northland Country

M: 0800 422 959 B: 0800 80 20 40

E: catherine.stewart@bayleys.co.nz

BAYLEYS

Mackys Real Estate Ltd,
Licensed under REA Act 2008

www.bayleys.co.nz

BAYLEYS

STEP INTO THE COUNTRY LIFESTYLE



www.bayleys.co.nz/1810020

For Sale: \$950,000 + GST

Catherine Stewart

Mobile: 0800 422 959

Phone: 09 439 4297

Mackys Real Estate Ltd,
Bayleys

Licensed under the REA
Act 2008

173 Arapohue Road, Dargaville

Will exchange, grazing lifestyle.

Enjoy the experience of country living while only minutes from town in this classic home, with spectacular views overlooking the Northern Wairoa River and picturesque farmland. This well located north facing 52.18ha property offers scope and balance with a good rolling to medium contour of grazing land, 10ha of native bush, 10ha of hay making land and five dams for the avid duck hunter. Quality infrastructure comprises of cattle yards which are beside a well maintained five bay implement shed with a lock up workshop. The central limestone race runs through the property and fencing comprises of five wire electric.

Off the tar seal road, the driveway leads you up to a modern 2003 Jennian Home, four bedroom, with spacious open plan kitchen, dining & lounge area with internal access to double garage. The property needs to be seen and enjoyed to appreciate all its beauty and beyond and with very motivated vendors who are willing to sell or exchange their lifestyle for a house around Whangarei surrounds.

Ireland - rugged, green and historic

As we flew over Ireland into Dublin, I admired the green of the countryside, but there is no comparison to the amazing range of greens we have here in New Zealand.

Dublin, like Paris, is very old, full of history and marvellous old buildings. Two days were spent exploring Dublin city on a 'hop on hop off' bus, including an interesting tour of the Guinness factory and a visit to an iconic Irish pub to listen to lively toe-tapping

ruins and kissed the famous Blarney stone. Not sure if it improved my eloquence? In this area we found a B&B in a very old, stately country mansion where the lady of the house was almost a replica of Joanna Lumley of 'Absolutely Fabulous' fame.



music. A delicious Irish-style Tapas meal accompanied by 'a point of de Guinness' was partaken in an ancient old pub called 'Gravediggers', so called because of its very close proximity to an equally ancient cemetery.

Through County Wicklow and County Wexford, we experienced delightful green farming areas and larger, more affluent homes. Kilmore Quay, a quaint little fishing village, was a delight with picturesque thatched roof cottages and a small port of fishing boats. We could not resist having fish and chips wrapped in paper beside the sea. At Waterford, formerly the home of the famous crystal, there was only a showroom, as it is now made in Eastern Europe.

Towards Cork we were at home with lots of roadside gorse. At Bantry we climbed the castle

The Ring of Kerry is a long coastal drive on narrow, winding and hair-raising roads around a large peninsula and the massive craggy mountains of the McCillicuddy Range. We passed through masses of little villages and towns, a couple of ports, and there were many ruins of castles and forts. Trees sometimes formed tunnels and gorgeous rhododendrons grew wild everywhere.

The Dingle Peninsula, a 5km long sand spit, and the location for the film 'Ryan's Daughter', was scattered with remains of stone age and iron age settlements and cottages. Living there is not for the fainthearted. It is ruggedly picturesque with mountains on one side, the sea on the other, and earth floored stone cottages which had been inhabited during the potato famine. What an existence!

Connemara is an area of lakes with scattered tiny islands and small lakeside villages, whilst further on there are hamlets on craggy hillsides. It is also the birthplace of James Joyce the famous Irish writer and the source of the beautiful Connemara marble. Kylemore Abbey and its very large Victorian walled garden were a must to see, and contrasted with the huge commercial peat farms with peat pellets drying in interesting mounds.

With only two days left, we entered Northern Ireland, and travelled along the beautiful coastline edged with sandy beaches and blue water, visiting the Giants' Causeway and Ballintoy Harbour (Stu's favourite). By now there was no time left to explore Belfast City, but we did take part in the 'Titanic Experience', the true story of that heartrending disaster of the past and now a major tourist attraction.

Janice & Stu

PAPAROA FARMERS
LOCAL GOODS DIRECT FROM THE PRODUCER



Fortnightly **SATURDAYS**
9am-noon at the Village Green

December 13th, 20th
January 10th

ph Mary 431 7123 or Graham 431 7209

GENERAL ENGINEERING

Rust Repairs and
Maintenance
Cars - trailers - horse floats
General welding
including alloy
Custom built floats and trailers

Ken Subritzky
09 431 7477
021 121 4879



TAKEAWAY MENU

BURGERS

| | |
|---------------------|--------|
| Cheese | \$7.50 |
| Prime Angus Beef .. | \$7 |
| Chicken | \$6 |
| Vegie | \$6 |
| Fish | \$6 |
| Bacon & Egg | \$7 |

PIZZAS

| | |
|-------------|-----------------|
| BBQ Chicken | Ham & Pineapple |
| Meatlovers | Hearty Local |
| Seafood | Vegetarian |
| Supreme | Cajun Chicken |

Small \$15 Large \$20 Available every day

EVERYTHING ELSE

| | | | |
|-------------------------|--------|------------------------|--------|
| Battered Fish | \$3.50 | Battered Mussel | \$1.50 |
| Hotdog on a stick | \$2 | Potato Fritter | \$1.50 |
| Chips min | \$2.50 | Sausages | \$2 |
| Mussel Fritters | \$4 | Wedges | \$6 |
| Curry Roll | \$2.50 | American Hotdog | \$4.50 |
| Spring Roll | \$2.50 | Battered Sausage | \$2.50 |
| Battered Oyster | \$1.50 | 6 Chicken Nuggets .. | \$3.50 |
| Battered Scallop | \$1.50 | | |

HOURS: Wed, Thur, Fri 4pm till late / Sat & Sun 8.30am till late

09 431 7359

BATTENSBY Bros.

CONTRACTING LTD

- Ground Cultivation • Silage and Hay
- Fertiliser Spreading • Fencing



Glenn 021 983 734 Rose 021 983 594

Ph: 09 431 6186 Email: battensbybrothers@xtra.co.nz

A1 Cats Boarding Cattery

Ken & Faye
Subritzky

548 Pahi Rd



Ph 09 431 7477

www.a1cats.co.nz

Kevin's Shed panel beating & repairs

Just ask

027 642 4991

09 431 6444



3245 Paparoa-Dakleigh Rd

Green beetles in the garden

Even with the changeable spring weather we have had, the cold has not deterred green stink beetles from coming out in droves to mate. They seem to congregate in pairs on the top of dahlias, citrus and calendulas in my garden. They are easy to squash in this joined state, but will drop to the ground at the slightest warning to try and escape.

Over winter these beetles hide in leaves or dead vegetation, and as soon as the weather warms up they are out to breed. Rafts of eggs are laid which quickly hatch into very small black and white or red nymphs which have five instars or moults. At first they cannot fly and are relatively easy to squash, but as soon as they change to green and grow wings, they are much harder to catch.

The beetles have a syringe-like mouthpiece and use this to suck the sweet juices from plants and fruit. Additional harm can be caused when the 'syringe needle' transfers plant juices from one plant to another, spreading plant diseases (like malaria mosquitoes) and they cause small hard lumps in the fruit they suck from – beans, tamarillos, tomatoes and capsicums are particularly badly affected.

Ways to combat them? Not easy! Squash as many of the mating adults as you can; best done in the early morning when they are cold and sluggish, and kill the eggs and small black offspring. It also helps if your tomatoes are kept in top condition as weak plants are usually attacked first.

Sprays? Take 20-30 green shield beetles, blend with 20 mls water, dilute with 10 litres of water, add 3ml of detergent and spray your plants. This will confuse them and keep them away from the plant. Or ... spray with insecticide... or ... maybe a bug net would work!!

Stella Clyde

Fire Force news

It is a beautiful spring day as I write, the sun is out & there's barely a hint of a breeze. Fire season is just around the corner.

After being ready for the inevitable Guy Fawkes call outs over the weekend, I'm pleased to report that Paparoa had none! I can currently see two bonfires out the window, safely smouldering away. But it seems everyone aimed their fireworks in the right direction this year & we had no reported incidents ... so well done Paparoa!

CALL OUTS 1/8/14 - 15/11/14

August

- 1st MedicalPahi
- 2nd Tree Down.....SH12
- 24th ... False Alarm

September

- 12th ... Rubbish FirePaparoa
- 28th ... AccidentPaparoa

October

- 8th Grass FirePaparoa
- 10th ... Electrical FirePaparoa
- 16th ... Smoke in vicinity.....Matakohe
- 19th ... Car Fire.....Paparoa
- 19th ... Controlled Burn Paparoa
- 25th ... Scrub Fire...Whakapirau
- 25th ... Scrub FireRuawai

November

- 10th .. Scrub Mangawhai Heads
- 14th ... House Fire..Whakapirau

Keep your family safe.

Come and see Dean and Reece for your FREE tyre health check today.

Garnetts Tyre Service

2 Gorge Rd, Maungaturoto. Ph 09 431 8255.

BRIDGESTONE TYRE CENTRE

School year ends ...

Congratulations to these ex-Paparoa School, now Otamatea High School senior students, who received recognition at their 2014 Senior Prizegiving.

- The J&S Duffy Family Cup for 'Cross-Country Best Effort' – Kayden French
- 'Service to Library' 4 years of service – Emily Parker
- 'Service to Performing Arts' – Music – Thomas Macdonald

The Student Leaders for 2015 include Te Whakakotahitanga (David) Jenkins as Manukura Tane. David will be one of two Maori leaders. Congratulations David.

We celebrate the achievements of all our district's students over the year and our best wishes go to them for next year!



ROTARY CLUB of MAUNGATUROTO and DISTRICTS (Inc)

Serving the area from Matakohe, Paparoa, Maungaturoto, Waipu, & Kaiwaka to Mangawhai



Wanted!!! Household Goods and Furniture for Rotary's Biggest Fundraiser "The Grand Auction"

held annually in March -
proceeds go back into our community
goods can be picked up and stored

Please ph: Eric Parsons, Mangawhai 09 431 4874

Keith Shadbolt, Maungaturoto 021 402 122

ROTARY - GOOD PEOPLE, HAVING FUN, DOING GOOD THINGS

MUSEUM MUSINGS ...

THE BUSH SMITHY

The trade of the blacksmith is ancient; stone anvils and hammers were used for the earliest working of metal. Blacksmiths fashioned anything from a simple nail to a suit of armour out of iron. The use of their skills was often risky, as in earlier times they could have been accused of practising magic or alchemy and even put to death. One wonders if it was a way for the accusers to avoid paying their bills!

In Europe, the 'smithy' was at the heart of every village, vital to the community. There were tools to be made or repaired, cart and carriage wheels, and horses to be shod in iron. The smith was also an animal doctor, caring for ailments and injuries to both horses and cattle.

By the mid 1800s the blacksmith had been gradually replaced by factory production and mechanical power sources. However, that did not necessarily apply to the new world. The pioneer settlers of New Zealand were reliant on these same self-contained resources. In Northland, the harvesting of kauri dictated the need for progressive mobility and the smithy was given a high priority in the camps. All the smith's skills and ingenuity were required, which probably lead to that much lauded Kiwi number eight fencing wire approach. Once an area had been 'worked out' the smithy would be abandoned and a new one erected at the next logging site. Eventually, when the logging ceased, the smithy relocated to the villages and as technology overtook them they adapted to become the engineers and mechanics.

The old Paparoa smithy is now the site of our local garage and one resident told me of the hundreds of old horseshoes dug up when new petrol tanks were installed. The Kauri Museum has a fine example of a fully equipped bush smithy, generously donated by the late Robert Sterling senior. A nice original touch is the cow horn handle fitted to the bellows pumping arm. PP

Tinopai fishing contest

Tinopai School's 15th fishing contest is up and running once again! On the 10th January we have the usual *inner harbour* (snapper, kahawai & gurnard) and *outer harbour* (snapper, kingfish & trevally) prizes, plus the sprat competition for 5-13 year olds. There are also spot prizes, raffles, hot food and hangi and the lucky ticket draw of \$1000!

Come along and support our beautiful little school – we will be topping up our van fund and buying new school furniture.

Ngā mihi tino nui ki a koutou katoa mo to tautokome to awhi

A big thank you for your continuing support and affection.

We have one change this year and hopefully it's not a biggie to anyone - our event is now not only *Smoke Free* but *Alcohol Free* as well in compliance with the new School liquor licencing laws.

Kia ora!

Birt & Currie Surveyors Ltd



Local Phone
09 280-9591

**Timely,
friendly &
personal
service**

info@landsurveyors.co.nz
www.landsurveyors.co.nz
PO Box 120 Paparoa 0543

REX BROWNE CONTRACTING

- Limestone & Metal Cartage
- Truck & Digger Hire
- Farm Roads
- Earthwork & Dams
- House Sites & driveways
- Wrapped Silage & Hay
- Cultivation
- Fencing & Mulching



**Maize
Silage
planting &
harvesting**

☎ 09 431 7556
☎ 021 720 590

Arty Farties /Community Connexions



The pumpkin competition for the A&P Show in February is going well. Some varieties of pumpkins are enormous - 125kg to 200kg at full growth.

We have trophies for the best *overall giant pumpkin*, and for the *overall smallest pumpkin*, 1st, 2nd and 3rd medals for school entries, plus a trophy for other entries. You can buy *giant seeds* at Mitre 10 stores in the children's seed section.

Our volunteers have done some amazing things this year, from patchwork to model Viking ships. There are lots of veggies coming from the community garden for the food banks.

We are grateful for all of your support and the friendships made. Happy holidays and a safe New Year 2015 to all.

Anne Shanks and the Volunteers at Arty Farties Inc.

Paparoa Motor Camp



**check out
our
self-contained
cottages**

- Tent and Van sites, Cabins, Kitchen,
- Showers ● Internet available ●
- Public Laundry facilities ● Pump-out Station

Ph 09 431 6515

cnr SH12 and Pahi Road, Paparoa

Crompton Engineering Ltd

Phone/fax 09 439 2393
31 Jellicoe Road, Ruawai



Hay Racks
- covered
or uncovered

**Palm Kernel
Trailers**



website: cromptonengineering.co.nz
email: crompton.eng@xtra.co.nz

FENCING CONTRACTOR

For all types of fencing, stockyards, handyman work, tree felling, tractor work etc.



phone

**Mike 09 431 6509
027 203 2694**

email

mandsplunkett@slingshot.co.nz

FARMWORK SERVICES LTD

Free horticulture programme returns to Paparoa in 2015

NorthTec is offering a further FREE programme in Paparoa for 2015 - the National Certificate in Horticulture (Level 3). Starting 16 February over 34 weeks the programme will be held at the Paparoa Community Church at 4 Hook Road, Paparoa.

The content of the programme includes:

- Plant propagation including budding, grafting & seeds.
- Function and structure of plants.
- Influences on plant growth.
- Weeds – methods of prevention and control.
- Plant pests, diseases, disorders prevention and control.
- Soils and fertilizers.
- Irrigation systems.
- Principles of organic horticulture and organic composting.
- Development of organic horticulture.
- Principles of permaculture.

Applicants should have a genuine interest in horticulture, be committed to the programme and meet these requirements:

- Be at least 16 yrs old at commencement of programme.
- Be able to read, write, and communicate in basic English.
- Be physically able to complete the specified outcomes.

The certificate will give you a good start in working in the horticulture industry and can be a pathway to further study. The main thing is to work as a team, be curious, learn lots and have fun along the way!

To find out more or enrol on the programme, contact Heidelind Luschberger on 021 0230 6465 or email heidelind@ihug.co.nz

Information about all NorthTec's programmes is available at www.northtec.ac.nz or you can call 0800 162 100.

Sustainable Rural Development Course



In my role as Facilitator/Teacher of the Sustainable Rural Development course held in Hook Road and facilitated by Northtec, I would like to give an update on what happened during the course which finishes in four weeks. Time has passed by quickly, as it does when you are enjoying it, and when you are busy. We created the beginnings of a fruit orchard in the gully beside the church with apples, pears, a nectarine, plums and other fruits donated by church members. Thank you!

As well as the fruit trees, we did some riparian planting with flaxes, grasses, toitois and cabbage trees, which will make the gully will look nice and interesting in the future.

With Janice and Stuart from Keep Paparoa Beautiful, we helped to plant about 60 pohutukawa trees donated by the local café (thanks to you as well) along the river. In 20 years or so there will be a red glow shining over the river at Christmas time.

Helping Mark Vincent of Otamatea Harbour Care

Group, we planted some 300 flaxes at Colin's farm in Ariel's Lane. In the long term, every little bit of riparian planting will help to reduce sediments reaching the Kaipara Harbour.

We are about to finalise the mist irrigation in the polyhouse, which will be used next year to raise seedlings for the food bank garden, and also the drip irrigation on the raised beds which will conserve water use.

I want to thank my students for giving their best, and to thank all the community members I met for their input, help and openness. I enjoy very much contributing to the Paparoa community.

Heidelind Luschberger
Facilitator/Teacher, Northtec

National Certificate in HORTICULTURE (LEVEL 3) ORGANIC HORTICULTURE FOCUS

Venue: **Paparoa Community Church, 4 Hook St, Paparoa**

Course dates: 16 February – 09 October 2015

Contact days: Monday: Practical and Thursday/Friday: Tutorial

Course content:

- Organic Horticulture
- Permaculture
- Composting
- Pest and Diseases
- Fertilizers
- Weed control
- Propagation
- Soils and more

FEES FREE

Tutor: Heidelind Luschberger

Phone: 021 0230 6465

Email: hluschberger@northtec.ac.nz

Courses and programmes may be cancelled, postponed or have their content or configuration changed from time to time (including during the academic year) at the discretion of NorthTec.

For more information:
0800 162 100
www.northtec.ac.nz



NorthTec
TAI TOKERAU WĀNANGA

Homekills

All Beef aged

**Salami ▲ Bacon ▲ Ham ▲ Sausages
Hamburger Patties**

**Traditional Manuka wood smoked
Bacon, Ham & Salami**

Over 25 years experience

For prompt & professional service contact
Wayne or Annette

09 439 2020 • 021 401 934
ruawaihomekills@gmail.com

Covering the Kaipara and Whangarei regions



Rhoda Morrison

Your Full Time Local Real Estate Agent

*Wishing you a
Happy and Safe Christmas*

09-431 6912
0274 800 691

rhodamorrison@xtra.co.nz
www.roperandjones.co.nz



first
national
REAL ESTATE

Roper & Jones

Dargaville Realty Ltd
Licensed REAA 2008

"No job too small"

Ross Latto

**LICENSED
BUILDER**

House construction, alterations,
renovations, general repairs

Ph 09 431 7442 021 772 766

PO Box 17, Paparoa

**The
Glass Guy**

Broken
Window
Repairs

Phone Colin
09 431 6595



Greypower Maungaturoto meets monthly, last Weds 1.30pm at the Community House, Hurdall Street. New members are welcome to go along and air views and learn from helpful debate.

Twilight bowls at the Maungaturoto Country Club begins 6pm (or earlier for practice) every Friday to 12th December, and then will restart 13th February. A Fun Day will be held on 4th January - everyone is welcome to join

OUT & ABOUT around the district

in a team and bowls can be provided. There are prizes and refreshments, and a meal available at the Country Club kitchen. Phone Albie 431 8148 for more information.

Many Happy Returns to Julie Harper who recently celebrated a notable birthday. Julie has joined the *Press Gang* and will add a young-person-friendly contribution.

Christmas Farmers' Market crafts. In recognition of a strong arts and crafts community in

Paparoa, the Farmers' Market has invited a number of crafts people to sell their work at the December 20th market. This is a special market to fit in with dates over Christmas and to cater for those looking for that extra special gift. Get along to the Village Green and see what's on offer. You may well be very surprised!

Two more recent birthdays. Many happy returns to Dorothy Quaife & Merle Hartles who have both reached the

grand age of 80 and are going strong! Congratulations.

Cancelled due to lack of interest. The NRC free workshop on weeds in the area received insufficient registrations. We hope that NRC will try again next year.

Car boot sales planned for Paparoa and Maungaturoto early in 2015. If you wish to participate, please contact Miriam Adomea on 431 7106 or txt to 027 358 6817.



Maungaturoto Pharmacy

144 Hurdall Street, Maungaturoto
Phone 09 431 8045
Fax 09 431 8808
Hours: Monday-Friday 9am-5pm

**MERRY CHRISTMAS
TO ALL OUR
VALUED
CUSTOMERS**



Please note we are closed
25th - 28th December 2014 and
1st - 4th January 2015

For all your health and beauty needs at competitive city prices and with friendly country service - call in and talk with Phil, Karen, Gayle & Traci - if we haven't got it, we will do our best to get it!

ENJOY THE BENEFITS OF SHOPPING LOCALLY AND SAVE
PETROL - WE ARE WORTH THE VISIT!!



Do you have your **LIVING REWARDS** yet??

Maungaturoto • Whangarei • Ruakaka • Dargaville • Ruawai • Kaikohe

Don't forget - if you are unable to collect your prescriptions from the Pharmacy we can deliver daily to Paparoa - Matakohē - Tinopai - confidentiality assured



Matakohē House



Licensed Café
and
Bed & Breakfast
Accommodation

CAFÉ: Open every day for Lunch,
Morning & Afternoon Teas, and Dinners

Check out some Matakohē House specialties:

MUSSELL & KUMARA FRITTERS (to die for)
NACHOS (spicy beef with sour cream)
'A LA CARTE' Dinner Menu

all our food is home cooked

Bookings are absolutely essential for dinners

WE CATER FOR ALL CELEBRATIONS - GIVE US A CALL
Matakohē House, 24 Church Road, Matakohē 09 431 7091



Spotlight on ... Julie Holcroft

For those of you who don't know Julie Holcroft, just look for the lady who always wears a brilliant smile on her face!

In 2007, having started a family in Auckland, the 'good life' beckoned and a 10 acre lifestyle block was purchased in Paparoa. Together, she and husband Tony set up a facility to roast Tony's 'Bica' brand of award-winning coffee which won a supreme award for their 'Sail Rock' blend and a gold for their decaffeinated blend. Now both are successfully marketed throughout NZ to cafes and home users.

Born in the UK, Julie's chosen career was nursing. After a year working in a Romanian orphanage, she spent a year nursing in Guernsey. Currently she is a Community Nurse in Dargaville. Julie is mother of three children at the Paparoa School, and has been on the Board of Trustees for the past two and a half years and Chairperson for one year. She is full of praise for the school, its staff and its achievements.



Julie & Tony's 10 acres is now a productive, almost self-sufficient lifestyle. An ardent gardener and cook, Julie is adept at using the produce for preserves and baking to feed her growing family. When her own produce is not available she supports the local Farmers' Market and enjoys the chance to catch up with other locals.

An extra house has been added to the property for Julie's parents who come from the UK to stay a year at a time, a wonderful bonus for them all.

Julie sums up her life here by stating, "I absolutely love Paparoa, its people and lifestyle and hope I never have to leave". PP

Anglican churches Christmas services 2014

St Mark's – Hook Rd, Paparoa:

Sunday 7th December - advent 2
10am Carols and Readings for Christmas and Holy Communion
Sunday 14th December Advent 3.
10am - Christmas Family celebration - Hanukah
Wednesday 24th - Christmas Eve 8pm Christmas Service and Holy Communion
Sunday 28th December - combined service @ Holy Trinity 9:30am

St Alban's – Oxford St, Whakapirau:

Sunday 21st December
10am Carols and Readings for Christmas and Holy Communion

Holy Trinity – Hurndall St, Maungaturoto:

Sunday 30th November Advent 1
7pm Anglican/Catholic Advent Carol service & Blessing of wreaths
Sunday 7th December 9.30am - Holy Communion - Advent 2
Wednesday 10th December 10am Mid-week Group. Carols
Sunday 14th December 9.30am - Holy Communion - Advent 3
Sunday 21st December - 9.30am - Advent 4 - Carols and readings for Christmas Holy Communion
Wednesday 24th Christmas Eve 8pm Christmas Service and Holy Communion
Sunday 28th December – Christmas 1 – 9:30am – Holy Communion.

25th December - Christmas Day Oihi – Marsden Cross – 11am

Ecumenical Service celebrating 200yrs of the Christmas message being preached in Aotearoa / NZ. This service will be a live telecast at 11am

January services resume normal pattern.

St Marks 1st, 2nd, 4th, Sundays 10am.
St Albans 3rd Sunday 10am.
Holy Trinity every Sunday 9:30am.
5th Sunday Combined service 9:30am Holy Trinity.

What's Hot
Keep Paparoa Beautiful tackling the challenging task of beautifying BOTH sides of the riverbank!

What's Not
When is summer ever going to arrive?

**FRESH & FROZEN
Oysters, Mussels,
Fish & Kina**



10am - 5.30pm
1994 Paparoa Valley Rd
09 431 6089

Paparoa tennis is a hit

The first professional coaching day for the season saw us with 26 kids and 8 adults at the Paparoa tennis courts, taking advantage of the skills of Tennis Northland's coach Grant van Dalsum. After discussion with parents, the children's tennis will now be on Tuesday afternoons prior to the adult sessions. Parents can stay for a hit themselves when their kids finish at 6pm if that suits them. Tennis is an excellent game to play as a family, so it's great for the adults to learn or refresh their skills. The tennis courts are open all year round for members or for casual play. Casual play is only \$2 a game or a family sub is \$70.



Children's Tennis: Coaching Tuesday afternoons

Beginners 4.30–5.15pm. More experienced 5.15–6.00pm

Adult Tennis: Tuesday evenings from 6pm, Friday afternoons from 1pm
All welcome. Some racquets are available.

Professional coaching group sessions with Grant van Dalsum

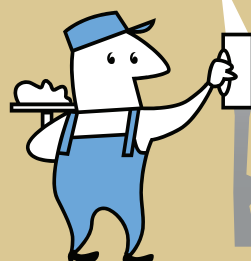
Saturday morning December 13: Beginners 9.30–10.15am,

More experienced 10.15–11.15am, Adults 11.15am–12.30pm

Contact Sue Skelton 431 6224 geosueskel@yahoo.co.nz

TINOPAI PLASTERERS

WE GUARANTEE THE HIGHEST QUALITY FINISH



35 Years experience in...

- GIB Stopping
- Fibrous Plastering

for FREE quote, call us now!
Trevor 021 0300 073

WHAT'S ON - DECEMBER 2014

Special Events & Meetings

- Anglican Christmas Church services** See details page 14
Christmas Day Lunch 25 Dec Paparoa Community Church Hook Road
Community Church Carol Service Hook Road 25 Dec 10.30am
Farmers Christmas Market 20 Dec Village Green 9am
Tennis Coaching with Grant van Dalsum Dec 13 see article pg 14
The Kauri Museum The Man from Matakohē exhibition ongoing daily
 Late night Xmas cheer, shopping and carols 11 Dec 6pm

Regular Events, Meetings and Organisations

- Anglican Church St Marks** 1st, 2nd & 4th Sundays 10am, Hook Road, Paparoa
Ararua Church 10.30am every Sunday, All welcome ph 431 6622
Art Group Paparoa 1st Sun in month, Helen Budd's Studio, ph 431 6192
Art Studio, Ruawai Mon 10-12noon; Tue 7-9pm, ph Frances 439 2554
Arty Farties • Summer Markets 9am-noon, opposite Village Green
 • Thur/Fri in the 'Tile Shed' ph Anne on 431 6229 to enquire
 • Crafty Kids Club alt Saturdays 10-2pm, Rm 5 Paparoa Primary School
 • Beginners Patchwork Group, Mon 7pm, Te Pahi River Drive
Badminton Thurs, years 5-11, 5.30pm; older/experienced 7pm, Paparoa Hall
Crafternoons 1st & 3rd Wed in month, 1-4pm, Tinopai Hall ph Lyn 431 6090
Exercise to Music Tue 10.30am Paparoa Hall \$5 ph Rose 431 7418
Farmers' Market Fortnightly Sat 9-noon, Village Green Dec 13, 20, Jan 10, 24
Fire Force 1st & 3rd Monday in month 6.30pm Depot Rd ph Cohan 431 6668
Gardening Club 2nd Wed of month, ph Lea 431 6296
Grey Power Last Wed in month, 2pm, Hall next to Resthome, M'gto
Indoor Bowls Paparoa Hall ph Loraine 431 7290 or Robyn 431 7306
Line Dancing Thurs 10am-noon Paparoa Hall ph Rose 431 7418
Mainly Music Wed 9.30am Paparoa Comm Church, ph Rebecca 431 7550
Matakohē Music Makers 2nd Wed in month 7.30pm @ Sports Pavilion, \$2 pp
Otamatea Quilters 1st Tue/mnth 7pm & 3rd Mon 10am, Paparoa Hall 09 439 2262
Paparoa Community Church 10.30am every Sunday, Hook Road
Paparoa Hall Functions venue ph Robyn 431 7306 or a/h Loraine 431 7290
Paparoa Lions Dinner Meetings 3rd Mon in month 6.30pm, Sports Pavilion
Paparoa Playcentre Tue & Fri 9.30-12noon Visitors welcome ph Tina 021 033 5128
Paparoa Plunket Society Coffee Group 1st Tue/month, 10am Franklin Rd
Paparoa Toy Library Wed 10.30-1pm, Paparoa Comm Church, Hilery 431 7330
Selwyn Centre Thurs 10am for over 65's, St Marks, Hook Rd, ph 431 8193
Sports Pavilion Functions venue, ph Vickie Owens 431 6432 for bookings
St Mary's Catholic Church 10am Wed, 6pm Sat, Maungaturoto
Tai Chi Tues 11am, Sports Pavilion, Showgrounds ph Shirley 431 6408
Table Tennis Tues 7.30pm, Sports Pavilion \$2 Pete 431 6822
Tennis Coaching children Tues 4.30-6pm; adults Tues evenings Ph Sue 431 6224
Ukelele Players Beginners / experts, Thur 4pm Matakohē, ph Dennise 431 7012
Waka Ama Tues & Thur evenings 5pm, Sunday 10am, Pahi Domain
Yoga Paparoa Sports Pavilion Mon & Thurs 8.30am, Thur 5.30pm, ph 09 280 9694

HOOK, LINE & SINKER

The snapper seem to be there again quite a few are being caught up around Tinopai.



The sharks are back and they have been noticed to be harrasing people up near the heads. There are a few gurnard around, not many, though quite a good size.

There are as yet not many people going fishing.

Gravy

Paparoa Press CLASSIFIED ADVERTISING

Bee Swarms - If you see any bee swarms, phone Mike 431 6008 021 134 3747

Shop from home

Free Avon brochure
 Carolyn ph 431 6008

For Sale - Water Tank

25000 litres, \$1800.00,
 5 years old, green, RX
 Plastics Ltd. Removal from
 Central Maungaturoto
 for more information:
 ph 021 779 245

LOCAL TIDES for December 2014

DECEMBER TIDES - CALCULATED for PAHI-WHAKAPIRAU

| DATE | LOW | HIGH | DATE | LOW | HIGH |
|------|---------|---------|------|---------|---------|
| 1st | 12.58pm | 7.32pm | 17th | 1.42pm | 7.46am |
| 2nd | 2.06pm | 8.10am | 18th | 2.44pm | 8.50am |
| 3rd | 3.10pm | 9.14am | 19th | 3.41pm | 9.48am |
| 4th | 4.07pm | 10.12am | 20th | 4.33pm | 10.39am |
| 5th | 4.59pm | 11.04am | 21st | 5.22pm | 11.27am |
| 6th | 5.46pm | 11.51am | 22nd | 6.09pm | 12.13pm |
| 7th | 6.29pm | 12.34pm | 23rd | 6.56pm | 12.59pm |
| 8th | 7.10pm | 1.15pm | 24th | 7.43pm | 1.44pm |
| 9th | 7.48pm | 1.52pm | 25th | 8.02am | 2.31pm |
| 10th | 7.29am | 2.28pm | 26th | 8.49am | 3.19pm |
| 11th | 8.36am | 3.04pm | 27th | 9.38am | 4.09pm |
| 12th | 9.13am | 3.41pm | 28th | 10.31am | 5.02pm |
| 13th | 9.55am | 4.23pm | 29th | 11.28am | 6.01pm |
| 14th | 10.41am | 5.11pm | 30th | 12.32pm | 7.04pm |
| 15th | 11.35am | 6.06pm | 31st | 1.40pm | 7.44am |
| 16th | 12.37pm | 7.08pm | | | |

Community Directory

EMERGENCY: FIRE ■ POLICE ■ AMBULANCE dial 111

COAST TO COAST HEALTH CARE

- Maungaturoto Medical Centre: 8am-5pm Mon-Fri 09 431 8576
 Paparoa Clinic: Doctor Tue + Fri 8.30am-12.30pm..... 09 431 7222
 For urgent after hours medical service (Wellsford)..... 09 423 8086
DISTRICT NURSE Dargaville Hospital 09 439 3330
 Healthline - 24 hour service..... 0800 611 116
HOSPICE KAIPARA Dargaville Hospital 09 439 3330
KAIPARA DISTRICT COUNCIL Helpline 0800 727 059
 Mangawhai Office..... 0800 100 388
LINKING HANDS Health Shuttle Service, Maungaturoto 09 431 8969
LIONS CLUB PAPAROA Secretary Alistair Banks 09 431 6373
MAUNGATUROTO CHIROPRACTIC..... 09 431 8019
MAUNGATUROTO PHARMACY..... 09 431 8045
MAUNGATUROTO REST HOME 09 431 8696

OTAMATEA COMMUNITY SERVICES Community House 09 431 9080

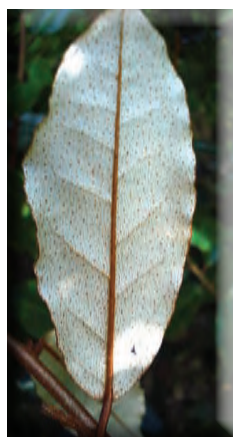
- PAPAROA LIBRARY** Membership free-of-charge, Wheelchair access
 Mon 1.30-4.30pm, Wed 10am-12noon, Thu 1.30-4.30pm, Fri
 9.30am-1pm. Open Market days - alternate Saturdays 9.30-1pm
PAPAROA PLAYCENTRE Vanessa 09 431 6731, Renee 09 431 6336
PAPAROA PLUNKET Cynthia Keay..... 09 431 8187
 PLUNKET Helpline 0800 933 922
PAPAROA PRIMARY SCHOOL 09 431 7379
PARENT PORT Inc. free help for families Linda 09 425 9357
PHYSIOTHERAPY Lyndsay Bargh Mon/Wed/Fri from 8am...431 8576
PODIATRIST / FOOTCARE Jayne Short 020 4022 65998 / 09 431 7188
PUKE ARANGA TE KOHANGA REO 09 431 7089
YOUTH & WHANAU FOCUS South Kaipara, Rose 09 431 7418



Wake up to weeds ... ELAEAGNUS



This weed originally came from Asia and appears to have been brought to New Zealand as a hedging plant, a good example of which can be seen on the road boundary of the old Paparoa Bowling Club. Kept under control with frequent clipping it does not appear to present a problem, preventing the plant from bearing its berries which the birds devour and spread widely. Left to its own devices it has now invaded our beautiful native bush and estuaries, capable of growing up to 8 metres tall and forming huge impenetrable thickets and strangling anything in its path. There are many examples of this around our own Paparoa/Pahi area.



What does it look like? The leaves are alternate, oval to elliptical, with irregular wavy margins and silvery under surface, accompanied by huge thorns when the plant enlarges and matures. Clusters of small sweet-smelling, white to brown flowers develop in the autumn and berries in the spring/summer.

Eradication: How do we eradicate it?

- Slashing, mowing or cutting down of plants and then poisoning the stumps by painting with Brushkill or similar chemical within 10 minutes of cutting.
- Spray is recommended for large areas – for aerial rates contact the regional council's biosecurity team. Penetrant aids the uptake of herbicides, and a range of these are available.
- Follow up is always recommended until all the seed has gone from the soil.

CAUTION: When using any herbicide or pesticide please read the label thoroughly and follow all instructions and safety requirements. Gloves and eye protection are necessary when working with Elaeagnus as the spines can cause injury.

For further information contact The Northland Regional Council or google Elaeagnus in NZ for a range of other options. PP

5 Questions for ... Kerry Bonham

Tell us what you have been focusing on lately The 2014 "Ride to Conquer Cancer" two-day cycling event to raise funds for cancer research by the Cancer Society in New Zealand. The ride was 200km over two days from Auckland and south through scenic countryside.

What inspired you to do this? Watching TV one night when it was being discussed. Being a two-time cancer survivor myself, I decided to join that same night.

Did you have the equipment and training necessary? This event is open to all ages and ability. On taking my old bike to a meeting of Marsden Wheelers Cycle Club, Whangarei, I learnt that both it and my gear needed updating! The Cancer Society provided the stylized lycra shirt for the ride and I now own that. As for training, I attended Club rides at 7.30am every Sunday morning; and for five months trained on local roads trying to do 10 hours or 200 km, each week.

How was the two-day ride? A wonderful experience and due to my training, not too difficult. It began with a ceremony to remember cancer victims and honour those fighting the disease today; I was singled out being a two-time survivor and was joined by three other survivors to walk up to the start line with my bike. It was an emotional time. I peddled for roughly 5 hours each day, and crossed the finishing line to the sound of hundreds of cheering supporters!

Was there a social aspect to the weekend? Definitely. My wife Joy was a great support and had our campervan (thank goodness) ready at the camping site on Saturday afternoon; many riders were camping in a huge tent. The organisation of the whole event was spot-on and the fun and camaraderie was strong. The commitment to raise the required amount of sponsorship could have deterred some riders, but it amazed me how readily my funds were donated. A weekend to remember!

Congratulations Kerry! PP



CAR REPAIRS

Cam's Autos

For all mechanical repairs and warrants of fitness. We service cars, 4WDs, trailers & utes.



Paparoa Valley Road
Ph 09 431 6620

Ross Murphy Plumber

CERTIFYING
PLUMBER

NEW HOUSING
RENOVATIONS
MAINTENANCE

09 431 7510
021 424 252

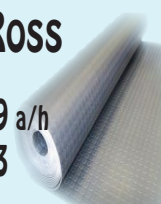


Carpet Layer

20 years experience

phone **Ian Ross**

09 431 6939 a/h
027 4996 413



HUBAND
CONTRACTORS LTD

ROADING • EARTHWORKS
DRAINAGE • SITEWORKS

For enquiries, contact Shaun:

Cell: 021 222 0272

Home: 09 431 8339

Email: admin@huband.co.nz

Registered Drainlayers